



integre[®] pro

The multi-color
photocoagulator optimizing
diagnosis and treatment

RETINAL PHOTOCOAGULATION

LASER TRABECULOPLASTY

LASER IRIDOTOMY

Helping the world see clearly

High precision performance for retinal disease treatment

Integre® Pro will enable you to set new standards in retinal laser photocoagulation. Combining high-precision optics matched to optimized laser performance, Integre® Pro is one of the leading systems for the diagnosis and treatment of retinal disease.

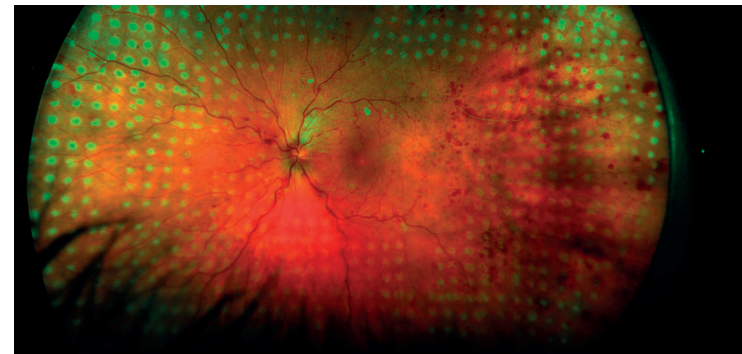
**Choose Integre® Pro from Ellex,
and you'll be able to transform
the efficacy and efficiency of
retinal photocoagulation.**

integre[®] pro

Uniform energy distribution

Integre Pro's proprietary dual-mode laser cavity delivers uniform energy distribution across the full spot diameter, eliminating hotspots and achieving optimal, homogenous burns*.

Whether you are positioning focal treatment in the macular area, or performing PRP in the periphery, it's a key design feature that enables you to achieve consistent, predictable treatment outcomes across a broad range of pathologies.



Integre® Pro delivers uniform energy distribution

*Image provided by Dmitri Yellachich, MD (Australia)
Based on system performance testing.



A wavelength for every pathology

Integre® Pro from Ellex features multi-color photocoagulation in an ergonomically advanced all-in-one laser/slit lamp design that provides an effective solution for retinal disease diagnosis and treatment.

Integre® Pro's high power, yellow-red configuration sets the standard for multi-color laser technology, offering the full treatment spectrum of a traditional three-color photocoagulator.

With Integre® Pro, the following wavelength configurations are available:



YELLOW-RED CONFIGURATION (561 nm and 670 nm)

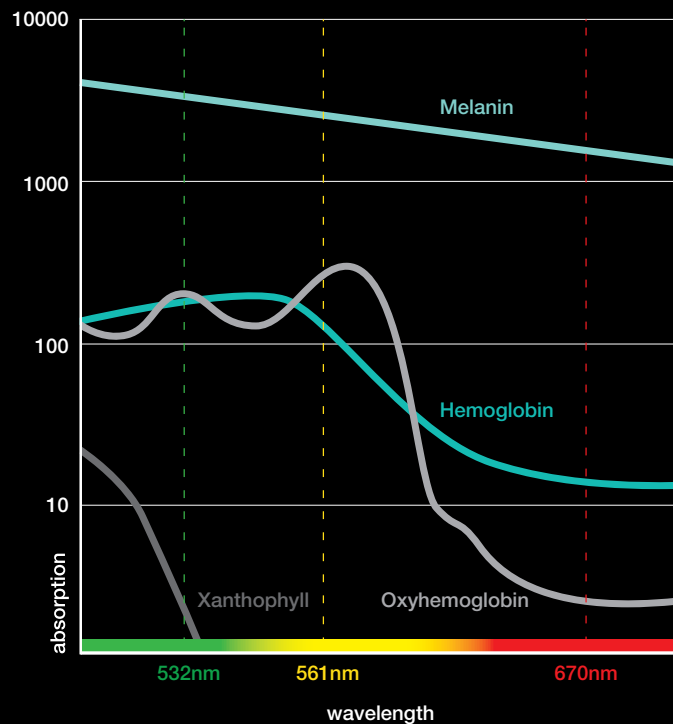


GREEN CONFIGURATION (532 nm)



YELLOW CONFIGURATION (561 nm)

Wavelength Clinical Characteristics



Accurate visualization, precise titration

The purpose-built Integre® Pro slit lamp, which channels the laser directly through the slit lamp optics for better visualization and optimal illumination, is optimized for use in the posterior segment. Featuring a 10-degree stereoscopic angle, it provides enhanced depth perception and a wider peripheral view, as well as high-contrast imaging and optimal illumination of the fundus.

When it's combined with an optimal red-reflex, it's a solution that enables you to titrate power levels precisely to deliver highly accurate treatment.

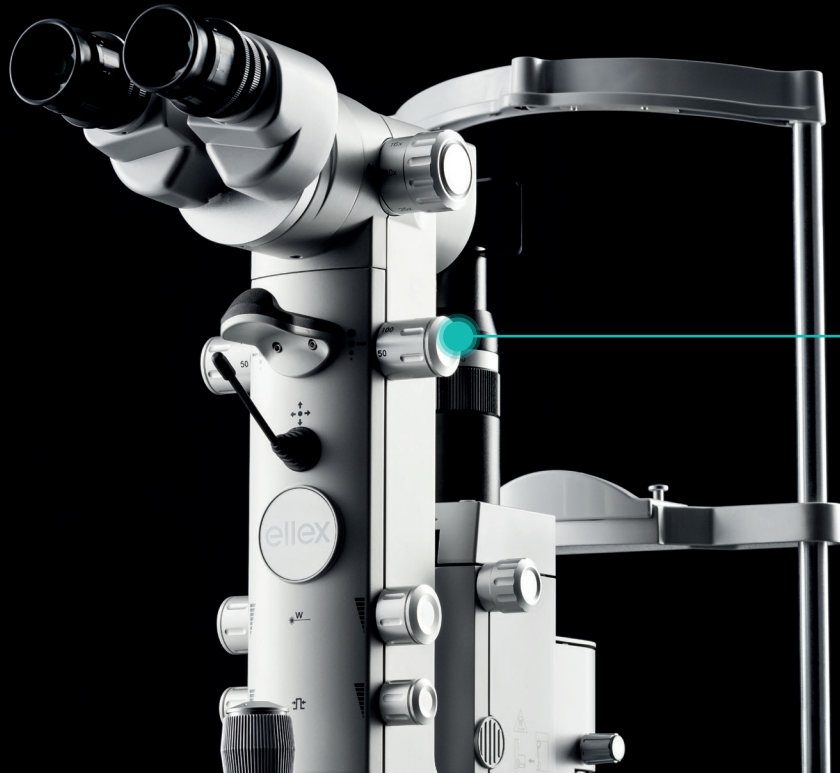
Continuous feedback for excellent results

Integre® Pro delivers real-time, active light feedback that continuously monitors and adjusts power output, combined with high-grade laser components. The result is consistent, reliable performance in the treatment of retinal disease.

Specifications

Laser Source	Solid-state laser diode and cavity
Wavelength	1 Yellow-red configuration: 561 nm and 670 nm 2 Yellow configuration: 561 nm 3 Green configuration: 532 nm
Power at the fiber port	Red: 1 watt. Yellow: 1.5 watts. Green: 1.5 watts
Power at the Cornea	Red: 50 – 1500 mW, Yellow: 50 – 1500 mW, Green: 50 – 1500 mW
Exposure Time	0.01 to 8.0 seconds
Spot Size	50 to 1000 μ m, continuously variable
Repeat Mode	Up to 20 Hertz
Aiming Beam	Red 635 nm, adjustable intensity
Micromanipulator	Ambidextrous, vibration damped
Magnification	6x, 10x, 16x, 25x, 40x
Electrical Requirements	100-240 VAC, 50/60 Hz, 800 VA
Cooling	Air cooled
Weight	32kg, 71 lbs. (laser only)
Dimensions (HxWxD)	62 x 76 x 47 cm, 24 x 30 x 19 inches (laser only)

The Yellow-Red multi-wavelength configuration provides the flexibility to address a number of different pathologies.



All controls — spot size, energy, shot duration and micromanipulator — are conveniently located, right at your fingertips.

Integre® pro



Find out how Integre® Pro will help you set new standards in deploying laser photocoagulation in the treatment of retinal disease.

Manufacturer

Ellex Medical Pty Ltd
3-4 Second Avenue
Mawson Lakes, SA 5095 Australia
Tel: +61 (0)8 7074 8200
ISO 13485 : 2016

Headquarters

Lumibird Medical
1, Rue du Bois Joli - CS40015
63808 Cournon d'Auvergne - France
Tel: +33 (0)4 73 745 745

Helping the world see clearly



© 2018, Ellex Medical Pty Ltd. Integre® Pro, True Spot, Total Solution and Power Control are trademarks of Ellex Medical Pty Ltd. Ellex is a registered trademark of Ellex Medical Pty Ltd. International patents pending and/or granted. E&OE. PB0018C.

Integre® Pro has a CE Mark (Conformité Européenne) and US Food and Drug Administration (FDA) 510(k) Market clearance for the indications of Retinal Photocoagulation, Laser Trabeculoplasty and Laser Iridotomy.

