



ultra Q™

The focused solution
for YAG laser procedures

CAPSULOTOMY

IRIDOTOMY

Helping the world see clearly

Technology that puts you in control

Whether you're seeking to perform capsulotomies for Presbyopic IOLs or peripheral iridotomies prior to the insertion of Phakic IOLs, it's imperative that your treatment equipment delivers excellent results every day.

Ultra Q™ has been created by Ellex to ensure you achieve your goals — delivering precision, perfectly and consistently, maximizing patient satisfaction.

Two treatment modalities

Specify Ultra Q™, and your treatment options comprise:

CAPSULOTOMY

IRIDOTOMY



ultraQ.

μm



Posterior Offset



mJ

Energy

Ultra Q™ – uniquely efficient

Featuring the industry's most efficient and fastest microsurgical YAG laser, Ultra Q's unique cavity design and custom power supply is technology that puts you in control*.

Choose Ultra Q™ from Ellex, and you'll be able to perform capsulotomy and iridotomy procedures at lower, more efficient power levels and with optimized shot-to-shot consistency.

IOL-friendly photodisruption

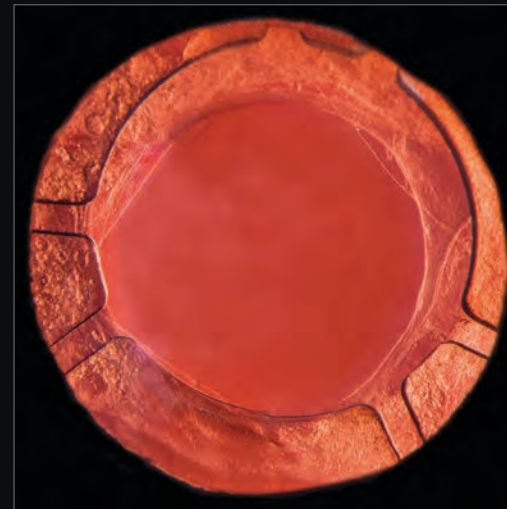
Featuring an Ultra Gaussian beam profile, Ultra Q™ focuses more power into the center of the beam profile.

It's a capability that delivers greater energy density, which reduces the energy levels needed to perform capsulotomy and iridotomy procedures effectively — and significantly lowers the risk of lens pitting.

Accurate, effective capsulotomy

Ultra Q™ from Ellex features industry-leading levels of precision and delivers ultra-low energy optical breakdown typically at 1.8 mJ (in air)*.

That means you can cut tissue more efficiently with fewer shots and less cumulative energy, achieving an exact capsulotomy opening in order to secure the highest standard of centration that's key to optimizing IOL performance. It's also a level of accuracy that makes a significant contribution to the prevention of lens damage.




Capsulotomy, Ellex

*Based on system performance testing. Data on file. Ellex Medical.

Images courtesy of Karl Brasse, MD, MRCOphth

Specifications

Laser Source	Q-switched Nd:YAG	Magnification	optimized for enhanced anterior segment visualization
Wavelength	1064 nm	Cooling	air cooled
Energy	Energy 0.3 to 10 mJ per pulse, continuously variable	Electrical Requirements	100–240 VAC, 50/60 Hz, 500 VA
Pulse Duration	4 ns	Weight	30 kg, 66 lbs (laser only)
Burst Mode	1, 2 and 3 pulses per burst, selectable	Dimensions (HxWxD)	57 x 75 x 44 cm, 23 x 30 x 18 inches (laser only)
Spot Size	8 μ m	Standard Accessories	Total Solution™ tables, remote display, safety glasses, laser safety sign, dust cover
Cone Angle	16 degrees	Optional Accessories	Footswitch, five-position magnification changer, beam splitter, co-observation tube, 35 mm camera adapter, video camera adapter, tonometer mount, capsulotomy, and iridotomy laser lenses
Offset (Posterior)	100 to 350 μ m, continuously variable		
Aiming Beam	red 635 nm, adjustable intensity		
Repetition Rate	up to 3 Hertz		



A continuously variable posterior offset (from 100 to 350 microns) allows you to accurately position optical breakdown and provides flexibility for all procedures.

ultraQ

μm
Posterior Offset

ellex



ellex

mJ
Energy

The industry's fastest firing rate of up to 3 shots per second permits quick, efficient treatment.



Find out how Ultra Q™ will help you set new standards in capsulotomy and iridotomy.

Contact us now to schedule a demonstration

Head Office

3 Second Avenue
Mawson Lakes, SA, 5095 AUSTRALIA
+61 8 7074 8200

Ellex Inc. (USA)

7138 Shady Oak Road
Minneapolis, MN, 55344 USA
800 824 7444

Ellex Deutschland GmbH

ZPO floor 1, Carl-Scheele-Str.16
12489 Berlin GERMANY
+49 30 6392896 00

Ellex Inc. (Japan)

Harumi Center Bldg 5F, 2-5-24 Harumi Chuo-ku
Tokyo 104-0053 JAPAN
+81 3 5859 0470

Registered Office

82 Gilbert Street
Adelaide, SA, 5000 AUSTRALIA
+61 8 7074 8200

Ellex iTrack

41316 Christy Street
Fremont, CA, 94538 USA
800 391 2316

Ellex France SARL

La Chaufferie – 555 chemin du bois
69140 Rillieux la Pape FRANCE
+33 4 8291 0460

Ellex Australia

3 Second Avenue
Mawson Lakes, SA, 5095 AUSTRALIA
+61 8 7074 8200

Helping the world see clearly

