

# Compact Touch<sup>®</sup>



**COMPACT IN  
DESIGN,  
DEFINITIVE IN  
DIAGNOSIS**



**A/B/P Ultrasound Platform**

# Compact Touch<sup>®</sup>

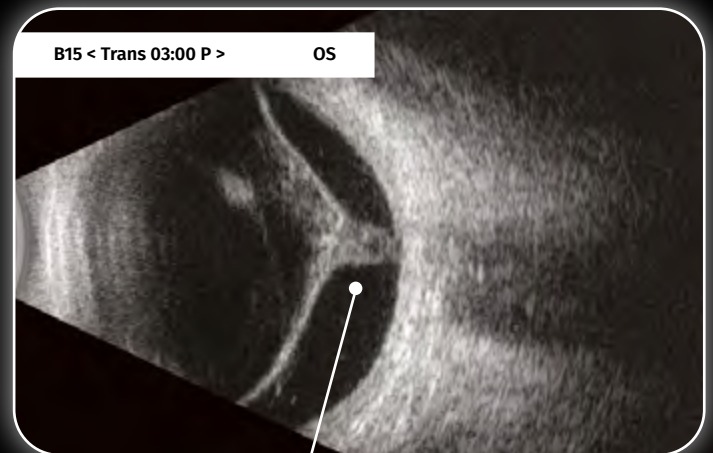
## ■ QUANTEL MEDICAL REDEFINES THE STANDARD IN B-SCAN IMAGING

The Compact Touch<sup>®</sup> benefits from a **new generation of 15 MHz B probe** with a **resolution increased by 30%**. It allows for a better visualization of the eye structures and the orbit hence a better diagnosis.

**Small in size**, this probe benefits from an **excellent ergonomics to facilitate its handling and use**.



**LUXATED  
LENS**



**RETINAL  
DETACHMENT**



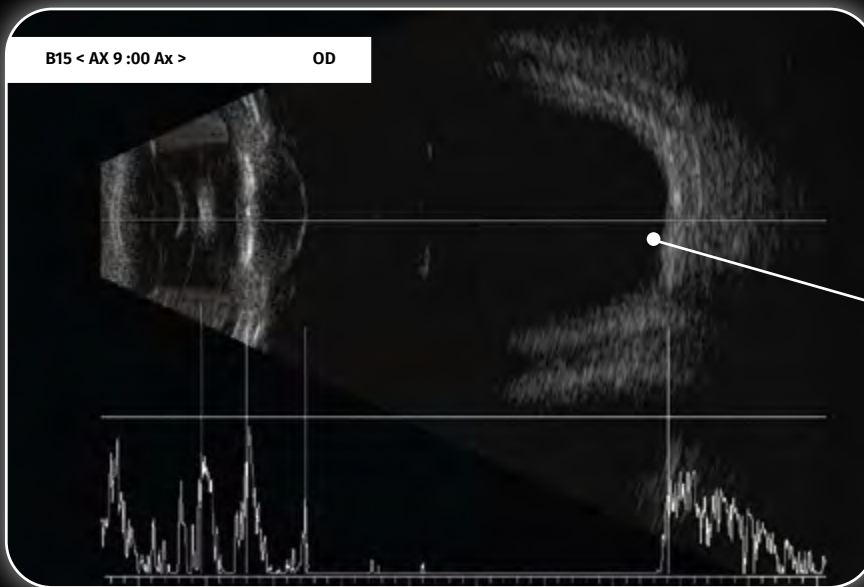
**MALIGNANT  
MELANOMA**



**SUBTLE AV  
FISTULA**

## ■ BIOMETRY IN B MODE

**Compact Touch®** has the **exclusive technology : Biometry in B-Mode**, it allows the **measurement of axial length**, just in the macula, especially in eyes of unusual geometry, like patients with long myopic eyes associated with staphylomas, while ruling out any other pathology of the posterior pole.



**HIGH MYOPIA**

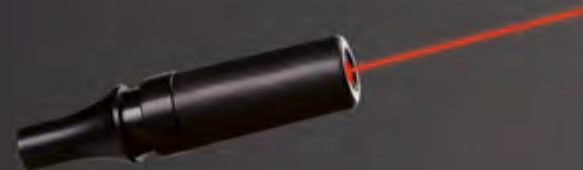
## ■ BIOMETRY AND IOL CALCULATION

**Ultrasound biometry** is the **only technology** suitable for axial measurement of all eye types, regardless of cataract density and media opacity. Ultrasound axial length measurement offers similar levels of precision to optical measurement (0.03 mm with immersion technique)<sup>1</sup>.

The IOL calculation function can compare the results of different types of IOLs and formulas. A total of **12 calculation formulas** are available, including formulas for post-refractive surgery patients. IOLs can be calculated in intervals up to 0.25D.

## ■ PROBEAM™ BIOMETRY PROBE\*

**ProBeam™** is exclusive to Quantel Medical. The probe generates a laser beam that creates a focal point for the patient to look at with the other eye macula: this facilitates measurement while increasing the precision of the probe<sup>2</sup>.



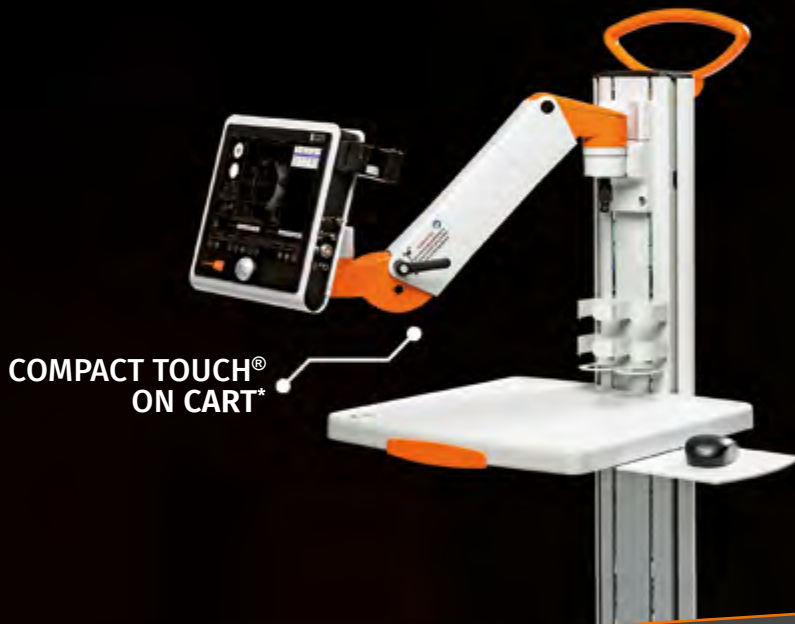
# Quantel Medical, the world leader in ophthalmic ultrasound



## ■ A SLEEK DESIGN, WITH INCREASED ERGONOMICS

A weight **less than 4 kg**, Compact Touch® is aptly named, since its dimensions have been reduced to suit for all types of clinical settings.

- It is more easily transportable, thanks to its foldable and **reclining carrying handle**.
- Fanless, it is as **silent** as a tablet.
- Its **VESA fixation system** offers the possibility to be **mounted either on a wall, on an articulated arm or on a mobile cart**, to enhance ergonomics around the patient\*.



## ■ PACHYMETRY\*

Pachymetry is essential for **refractive surgery and glaucoma diagnosis**. The Compact Touch® has several measurement modes, **offering a precision of  $\pm 5$  microns** and a **measurement range of 200 to 999 microns**.

**IOP measurements can be corrected** using integrated tables of correlations between IOP and corneal thickness, including Ehlers, Doughty and Dresden.

(\* ) Option



## ■ A CONNECTED ULTRASOUND PLATFORM

- With **DICOM interface**, the Compact Touch® can import (worklist function) and export (storage function) images and patients reports to the PACS. Reports and images printout is also possible either on a **DICOM printer**, or a **local printer**.
- **Video sequences** (Cineloops) can be sent in **DICOM format**.
- For easier use, a **wireless keyboard** and **mouse** can be connected.



## B MODE

Grey levels:	256
Adjustable gain:	20 to 110 dB
Time Gain Control (TGC):	0 to 30 dB
Dynamic range adjustment:	25 to 90 dB
Storage of still images and video sequences (up to 40 second duration) on hard disk	
Image post-processing tools:	calipers, areas, markers, comment

### 15 MHz probe

Transducer frequency:	15 MHz
Angle of exploration:	50°
Depth of exploration:	60 mm (2.36")
Focus:	24 mm (0.94")
Axial resolution:	115 µm
Lateral resolution:	400 µm
Frame Rate Acquisition:	up to 16 Hz

## BIOMETRY

Adjustable gain:	20 to 110 dB
Time Gain Control (TGC):	0 to 30 dB

### 11 MHz Probe

Transducer frequency:	11 MHz
Tip diameter:	7 mm (0.28")
Electronic resolution:	0.03 mm (0.002")
Depth:	60 mm (2.4") on 1536 points
Contact and immersion techniques compatible	
Aiming beam:	LED or laser pointer ProBeam™

### Axial length measurements

Ultrasound propagation velocity adjustable per segment (anterior chamber, lens, vitreous) and IOL and vitreous material  
 Built-in pattern recognition: phakic, aphakic, PMMA, acrylic and silicone material for pseudo-phakic eye types  
 Automatic calculation of standard deviation and average total length (series of 10 measurements)  
 Acquisition modes: automatic, auto + save, manual  
 Automatic detection of scleral spike

### IOL calculation

SRK-T, SRK-II, HOLLADAY, BINKHORST-II, HOFFER-Q, HAIGIS  
 Post-op refractive calculation:  
 - Pre-op and Post-op refraction, Pre-op and Post-op keratometry  
 - 6 different methods for keratometric correction and implant calculation:  
 History derived, refraction derived, contact lens method, Rosa regression, Shammas regression, Double K/SRK-T (Dr. Aramberti's formula)  
 9 values bracketed for desired ametropia for each IOL (IOL increment steps: 0.25D or 0.50D). Simultaneous display of 4 different IOL calculations

## DATA MANAGEMENT

Built-in physician and patient database  
 Exportation of still images and video sequences  
 Customisable digital and printed report  
 DICOM compatible (Worklist, Storage, Print)\*  
 EMR compatible  
 Compatible with PC and USB video printers

# TECHNICAL SPECIFICATIONS

## PACHYMETRY\*

Transducer frequency:	20 MHz
Tip diameter:	1.2 mm (0.05")
Method:	contact
Convergence:	0.5 mm (0.02") from the tip
Angle:	45°

### Corneal thickness measurements

Measurement range:	200 to 999 microns
Number of measurements:	1 to 10
Precision:	± 5 microns
Velocity:	adjustable
Methods:	central measurement or cartographic map (automatic, continuous, scanning)
Cartographic map:	user - 9C8L - 9C4L - 5C8L - 5C4L - 9C - 5C - 8L - 4L

### I.O.P. correlation tables

Tables correlating intraocular eye pressure and corneal thickness:  
 Ehlers + Doughty + Dresdner + unlimited user-defined tables

### Specifications

Bias correction:	up to 120%
------------------	------------

## GENERAL INFORMATION

Back-lit LCD colour touch screen monitor (resolution 1024 x 768 px)

### Electrical requirements

Power supply:	100-240 Vac ±10% single phase with earth
Frequency:	50/60 Hz
Power:	60 W max

### Features

Overall dimensions:	26.8 cm (W) x 4.0 cm (D) x 24.6 cm (H) 10.6" x (W) x 1.6" (D) x 9.7" (H)
Touch screen dimensions:	21 cm (W) x 16 cm (H) - 8.3" (W) x 6.3" (H)
Weight:	3.5 kg (7.7 lbs)
Ports:	4 USB, 1 ethernet, 1 HDMI

### Peripherals and accessories included in the basic configuration

Footswitch  
 Bluetooth mouse

### Peripherals and accessories in option\*

External PC printer Windows Operating System compatible (USB or Wifi)  
 Video printer with USB connection

### (\* Option

Specifications are subject to change without notice.  
 Non contractual pictures

## BIBLIOGRAPHY

1. Comparison of immersion ultrasound biometry and partial coherence interferometry for intraocular lens calculation according to Haigis – W. Haigis et al. – Graefes Arch Clin Exp Ophthalmol. 2000 Sep
2. New laser fixation device for ultrasound biometry – M. Charles – Ophthalmol. Clin. Exp. 2007



www.lumibird-medical.com

## Manufacturer

Quantel Medical  
 1 Rue du Bois Joli – CS40015  
 63808 Cournon d'Auvergne – FRANCE  
 Tel.: +33 (0)4 73 745 745  
 Email: contact@quantelmedical.fr  
 ISO 9001 : 2015 – ISO 13485 : 2016

## Headquarters

Lumibird Medical  
 1 Rue du Bois Joli – CS40015  
 63808 Cournon d'Auvergne – FRANCE  
 Tel.: +33 (0)4 73 745 745



QUANTEL MEDICAL - ELLEX - OPTOTEK MEDICAL

© 2022. Quantel Medical, Compact Touch<sup>®</sup> and ProBeam™ are trademarks of Quantel Medical. All rights reserved.